

**In One Network  
Or  
In One Organization  
Seamlessly Integrate any or ALL**

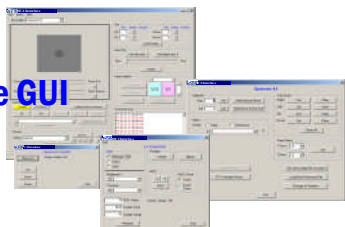
- Supported IR Cameras
- Supported Visible Cameras
- Video Control
- Switching, spitting or both
- NTSC and/or VoIP (H.264)

**One Software Interface**

- Pelco D
- Same commands across all cameras (except where camera unique functions are needed)

**One GUI**

- Yours or ours



**6125DE2**

- Is a DE2 Interface
- Directly Drives QPT90, QPT 200 and analog PELCO Pan/Tilts
- Can Drive Serial pan/tilts such as Sentry 90
- Or?

**2110 Series**

- Is a DE2 Interface
- Embedded control for your pan/tilt
- **Field upgradeable firmware**
- **Daughter board I/O to add special functions**

- Video insertion
- GPS receiver
- IRIG sync and/or generation
- Genlock
- Tracking control



**Design to meet your OEM System**

- Physical & Functional
- Upgrade to full MIL temp range
- Standard software interface simplifies integration
- Add cameras, range finders, illuminators to meet your needs

**Field Proven**

- 6125 series deployed throughout the world in harsh environments
- 2110 embedded in high end sensor system being deployed in the US and abroad
- DE2 Interface in use by
  - US Customs & Border Patrol
  - USAF
  - US Navy
  - US Coast Guard
  - EG&G
  - Northrop Grumman